



Overview

Product name	Anti alpha Tubulin antibody [TU02] - Loading Control
Description	Mouse monoclonal [TU02] to alpha Tubulin
Tested applications	WB, IHC, ICC/IF, FC, IP, ELISA
Species reactivity	Reacts with: Human, Mouse, Rat. Other species are not tested, Please decide the specificity by homology.
Immunogen	Full length protein corresponding to alpha Tubulin.
Positive control	This antibody gave a positive signal within WB in the following whole cell lysates: HeLa; HEK293; HepG2; NIH3T3.
General notes	The concentration of this antibody is batch dependent.

Properties

Form	Liquid
Storage instructions	Store at +4°C short term (1-2 weeks). Upon delivery aliquot. Store at -20°C long term. Avoid freeze / thaw cycle.
Storage buffer	pH: 7.40, Preservative: 15mM Sodium azide, Constituent: PBS
Concentration	100 µg at 1 mg/ml
Purity	Protein A purified
Clonality	Monoclonal
Clone number	TU02
Isotype	IgG1

Applications

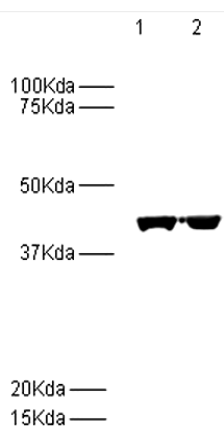
The application notes include recommended starting dilutions; optimal dilutions/concentrations should be determined by the end user.

WB	1/500 - 1/5000.
IHC	1/20 - 1/200.
IF	1/10 - 1/100.
IP	1/500 - 1/5000.
FC	Use at an assay dependent concentration.

Target

Function	Tubulin is the major constituent of microtubules. It binds two moles of GTP, one at an exchangeable site on the beta chain and one at a non-exchangeable site on the alpha chain.
Alternative names	Alpha-tubulin 1 antibody, ALS22 antibody, B ALPHA 1 antibody, bA408E5.3 antibody, H2 ALPHA antibody, Hum a tub1 antibody, Hum a tub2 antibody, LIS3 antibody, MGC171407 antibody, MGC55332 antibody, etc.

Anti alpha Tubulin antibody [TU02] - Loading Control images



All lanes : Anti alpha Tubulin antibody [TU02] - Loading Control (PMC202) at 1/5000 dilution

Lane 1 : HeLa Whole Cell Lysate.

Lane 2 : HEK293 cell lysate.

Lysates/proteins at 20 µg per lane.

Western blot - Anti alpha Tubulin antibody [TU02] - Loading Control (PMC202)