



Overview

Product name	HiPro™ Goat Anti-Rabbit IgG (H+L), HRP Conjugate
Description	Goat polyclonal Secondary Antibody to Rabbit IgG(H+L), HRP Conjugate
Target species	Rabbit
Tested applications	WB, IHC, ICC, ELISA
Immunogen	Rabbit IgG whole molecule
Conjugation	HRP

Properties

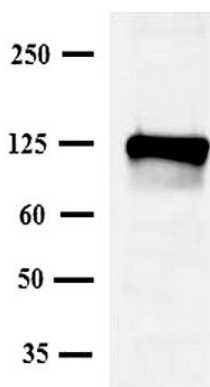
Form	Liquid
Storage instructions	Store at -20°C. Avoid freeze / thaw cycle.
Storage buffer	pH: 7.2, Preservative: 0.01% Gentamicin sulphate, Constituent: 10mg/ml BSA, 0.15M Sodium chloride, 0.02M Potassium phosphate
Purity	IgG fraction
Purification notes	This product was prepared from monospecific antiserum by immunoaffinity chromatography using Rabbit IgG coupled to agarose beads.
Conjugation notes	Horseradish Peroxidase (HRP)
Clonality	Polyclonal
Isotype	IgG
General notes	Many of our customers have reported seeing brown precipitates in the vials. The brown precipitates are very common with HRP conjugated antibodies; we suggest vortexing the vial and using this antibody as normal. Our customer's feedback says the antibody worked great. If in case the antibody fails to give results then please contact our Scientific Support team for assistance.

Applications

The application notes include recommended starting dilutions; optimal dilutions/concentrations should be determined by the end user.

WB	1/1000 - 1/20000.
IHC	1/100 - 1/1000.
ICC	1/20 - 1/200.
ELISA	Use at an assay dependent concentration.

HiPro™ Goat Anti- Rabbit IgG (H+L), HRP Conjugate images



Developed using the ECL technique

Performed under reducing conditions

Exposure time : 1 minutes

Western blot - HiPro™ Goat Anti- Rabbit IgG (H+L), HRP Conjugate (PMS302)