

## Overview

<b>Product name</b>	HiPro™ Rabbit Anti-Goat IgG (H+L), HRP Conjugate
<b>Description</b>	Rabbit polyclonal Secondary Antibody to Goat IgG(H+L), HRP Conjugate
<b>Target species</b>	Goat
<b>Tested applications</b>	WB, IHC, ICC, ELISA
<b>Immunogen</b>	Goat IgG whole molecule
<b>Conjugation</b>	HRP

## Properties

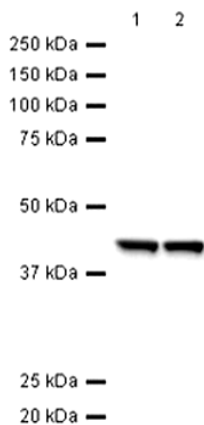
<b>Form</b>	Liquid
<b>Storage instructions</b>	Store at -20°C. Avoid freeze / thaw cycle.
<b>Storage buffer</b>	pH: 7.2, Preservative: 0.01% Gentamicin Sulfate, Constituent: 0.42% Potassium phosphate, 0.87% Sodium chloride, 1% BSA
<b>Purity</b>	IgG fraction
<b>Purification notes</b>	This product was prepared from monospecific antiserum by immunoaffinity chromatography using Goat IgG coupled to agarose beads followed by solid phase adsorption(s) to remove any unwanted reactivities.
<b>Conjugation notes</b>	Horseradish Peroxidase (HRP)
<b>Clonality</b>	Polyclonal
<b>Isotype</b>	IgG

## Applications

The application notes include recommended starting dilutions; optimal dilutions/concentrations should be determined by the end user.

<b>WB</b>	1/1000 - 1/20000.
<b>IHC</b>	1/100 - 1/1000.
<b>ICC</b>	1/20 - 1/200.
<b>ELISA</b>	Use at an assay dependent concentration.

## HiPro™ Rabbit Anti-Goat IgG (H+L), HRP Conjugate images



Developed using the ECL technique

Performed under reducing conditions

Exposure time : 1 minutes

**Western blot** - HiPro™ Rabbit Anti-Goat IgG (H+L), HRP Conjugate (PMS305)